

Metamorphosen

Volkmar Fritsche

Tempo quasi Andante, Dynamik quasi piano

5 6 5 11 5

16 5 21 4 25

26 Largo 4 30 a tempo (Andante) 32 3

35 Largo 3 39 Scherzando (♩=ca.180)

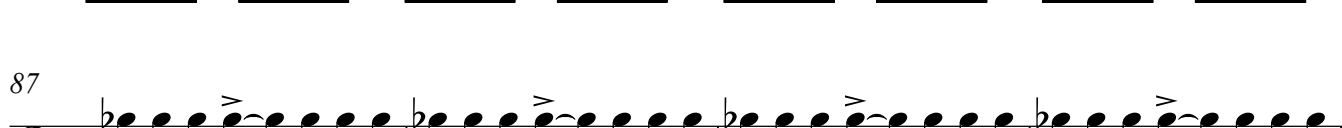
42 45

47

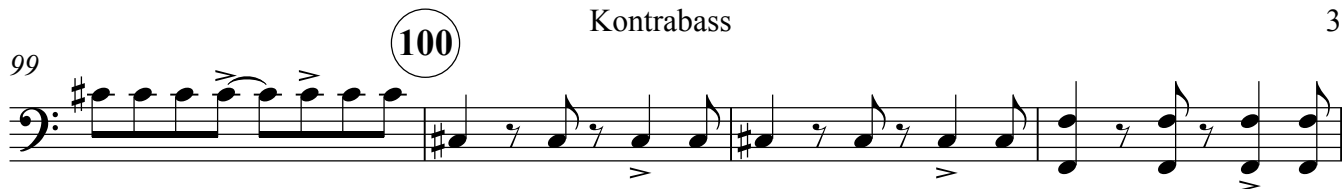
48



54

**Feroce** ♩=ca.106**Allegro, ma non troppo***sempre stacc.*

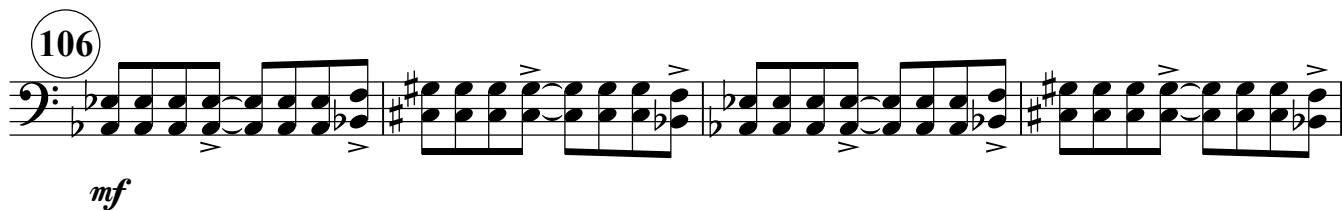
99



103



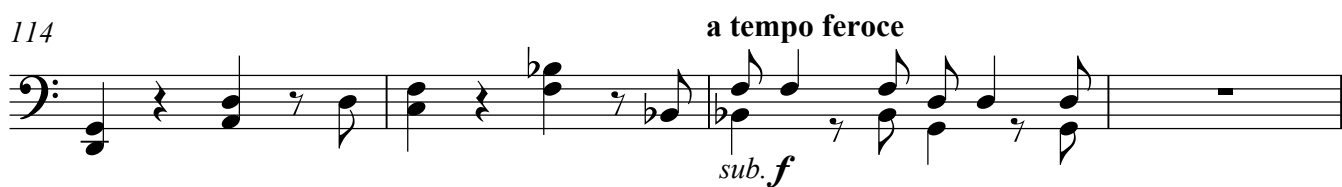
106



110



114



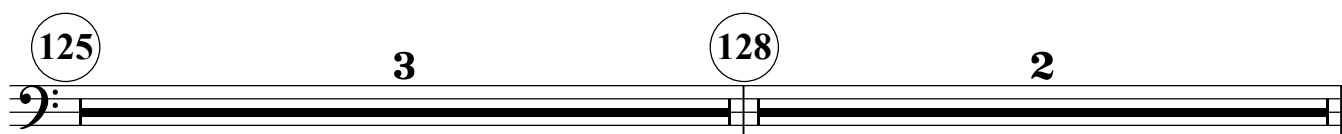
118



122

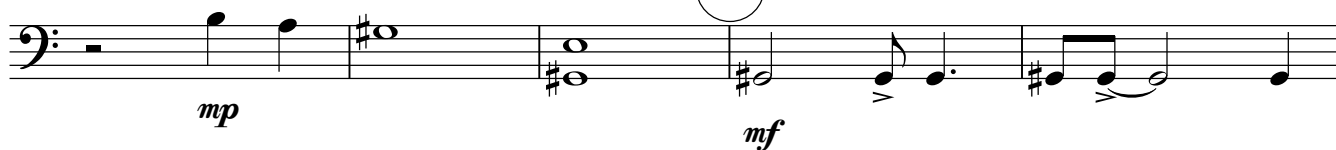


125



130

133 un poco lento e molto espressivo



135



140

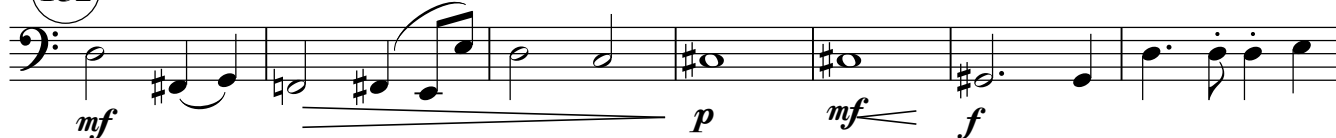


146

148



152



159

160



164

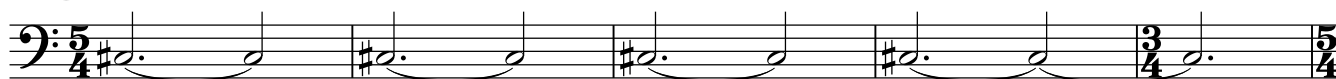
6

molto rit. . . .



173

Larghetto



ppp

178



183

2



190 **2** **2** Solo *gliss.* *gliss.*
mp

198 **199** *Tutti gliss.* *simile*
mf

204 **205**
f pizz.

210 **211**
ff arco

216 *pizz.* *f* *mf* *arco*

222 *rit.* **223** *pizz.* *tempo corrente*
f *mf* *pp*

228 **231**
f arco

235 (continuare tempo corrente e accel.)
p *pizz. mp* *pp*

242 **243** *Feroce Tempo I*
Allegro ma non troppo
sempre stacc.
ff arco

246

247



250



254



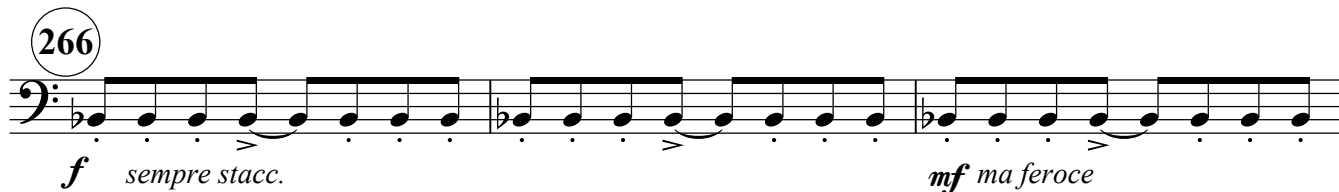
258



262



266

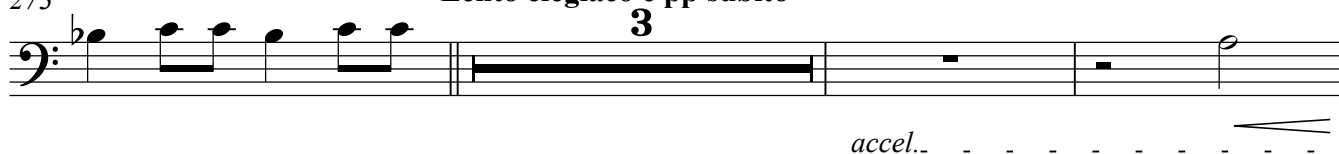


269



273

Lento elegiaco e pp subito



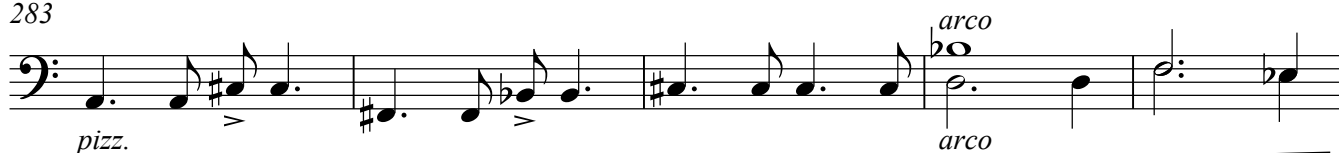
accel..

279 a tempo I (♩=106) molto espressivo

(arco)



283



288



294



302

tempo mosso

un poco scherzando

pizz.



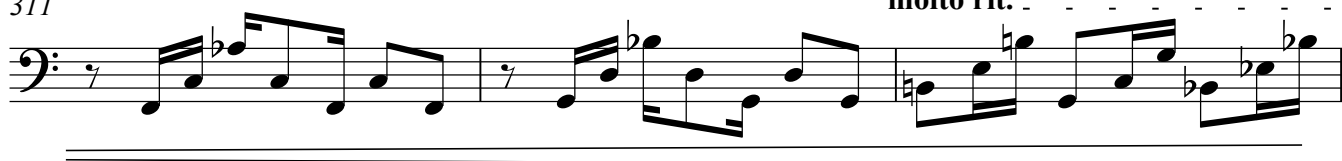
poco a poco cresc.

307



311

molto rit.



314 - - - - - 315 a tempo

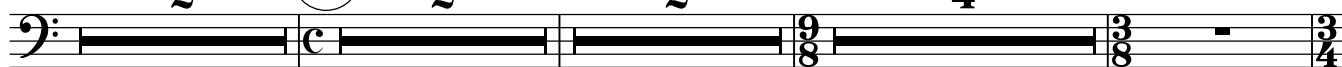


319

rit.



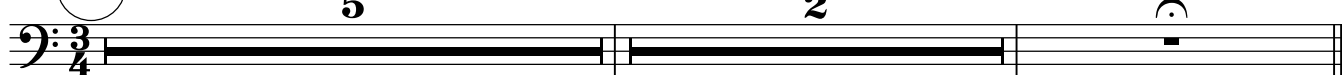
323 - - - 2 325 Allegro 2 4



(sempre ritenuto)

accel. - - - -

334



Poco a poco ritardando - - - -

8 (342) EPILOG (Lento)

Kontrabass

